

# Freiheit®

## USER GUIDE

FOR FREIHEIT® FREEDOM STROLLER WALKING FRAME



**MAX USER WEIGHT: 150KG**

ORDERING CODE: 1545 1546 1547

## CONTENTS

1. Intended Use .....	2
2. Definitions .....	2
3. Warnings .....	3
4. Product Specifications .....	4
5. List of Components .....	5
6. Instructions for Use .....	5
7. Care and Maintenance .....	7
8. Limited Warranty .....	9

## 1. INTENDED USE

The Freiheit Freedom walking frame is designed for individuals who, due to a wide variety of reasons, require additional support while walking. It should be used as a tool to assist people who have mobility difficulties with standing, walking or sitting independently.

The most robust walking frame in our lightweight aluminium range, the German engineered Freiheit Freedom walking frame supports a heavier user weight up to 150kg while remaining lightweight and easily transportable.

## 2. DEFINITIONS

**Symbols used in this user manual and their meanings.**



**WARNING!** Failure to heed this warning may result in damage to the product or serious injury to the operator/user.



**CAUTION!** Beware of pinch points.



**ATTENTION!** Read and understand the instructions in the user guide before using the product.

### 3. WARNINGS



**ATTENTION!** This user manual must be read before using the walking frame. Severe injury or death may result if user instructions, maintenance instructions and product warnings are not followed.



**WARNING!** The decision to use this walking frame should always be guided by a qualified Health Care Professional, who can also advise and assist with the correct height adjustment and usage instruction.



**CAUTION!** Fingers or other body parts can be trapped between the walking frame's folding mechanism during operation. Be extremely careful when adjusting the walking frame. Observe the dimensions of gaps between the walking frame's elements to avoid trapping your fingers or other body parts.

### LIMITATIONS FOR USE

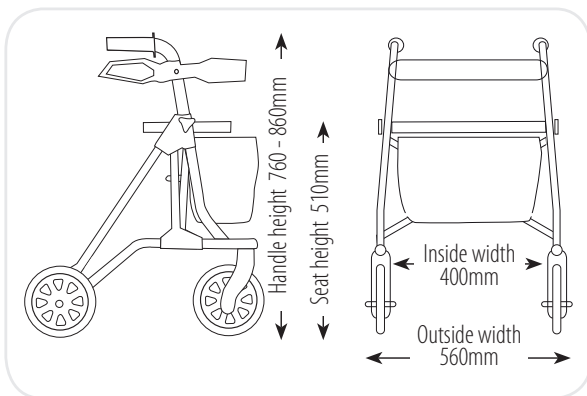
- **Maximum user weight is 150kg.**
- Instruction and practice are necessary for successful use of the walking frame.
- DO NOT sit on the seat for long periods. (It is designed as a limited seating function for temporary rest).
- Ensure handbrakes are fully operational before each use.
- The walking frame can be used indoor and/or outdoor on flat surfaces.
- Use the walking frame only for the purpose it is intended for.
- DO NOT stand on the walking frame.
- DO NOT hang anything from the walking frame.
- Ensure left and right handles are level to avoid instability problems.
- DO NOT use the walking frame until the handles are properly adjusted and securely tightened.
- Always lock brakes when sitting on the walking frame.
- DO NOT use the walking frame as a wheelchair; doing so may cause a tip over, resulting in injury.
- DO NOT use to pull-up on. This is not a transfer aid.

## 4. PRODUCT SPECIFICATIONS

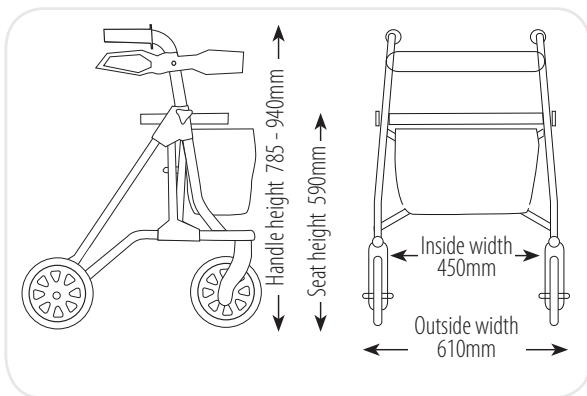
### SPECIFIC DIMENSIONS

	Narrow - 1545	Standard - 1546	XC - 1547
Maximum user weight	150kg	150kg	150kg
Adjustable handle height	760mm – 860mm	785mm – 940mm	845mm – 940mm
Seat height	510mm	590mm	595mm
Overall width	560mm	610mm	675mm
Inside width	400mm	450mm	450mm
Approx. frame weight	6.4kg	6.4kg	7kg
Folded width	240mm	240mm	240mm

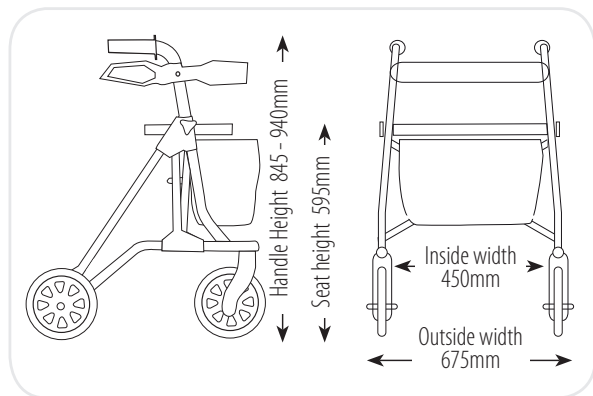
#### Ordering Code: 1545



#### Ordering Code: 1546

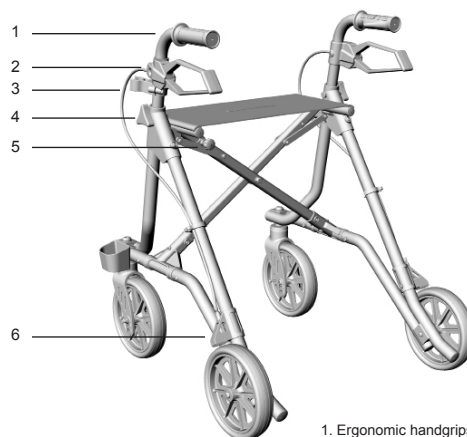


#### Ordering Code: 1547



## 5. LIST OF COMPONENTS

The Freiheit Freedom walking frames are supplied in boxes and come folded, for easy transportation. The contents include one complete walking frame folded, one bag and one user guide.



1. Ergonomic handgrips
2. Brake lever
3. Cane holder
4. Screw for height adjustment
5. Anti folding device
6. Brake

## 6. INSTRUCTIONS FOR USE



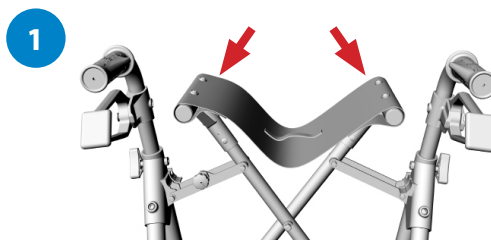
**CAUTION!** Beware of pinch points when setting up the walking frame.

### SETTING UP/UNFOLDING THE WALKING FRAME

Place the walking frame in front of you in the direction of travel and put the parking brake on.

Using both hands, press the tubes on either side of the seat down to the left and right until the folding mechanism clicks into place(1).

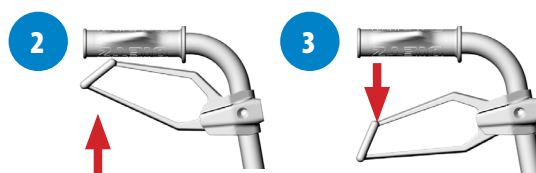
Attach the mesh bag, bag or basket to the appropriate fittings.



### BRAKES

Service brake (when pushing): Pull the brake lever up (2).

Parking brake (for parking): Press the brake lever down (3).



**WARNING!** When using the walking frame in a stationary position, the hand brakes **MUST** always be locked.

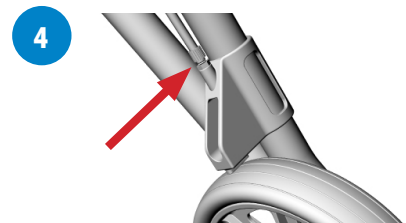


**WARNING!** Seek advice from a qualified health professional for the appropriate height to suit your needs

## BRAKE SETTINGS

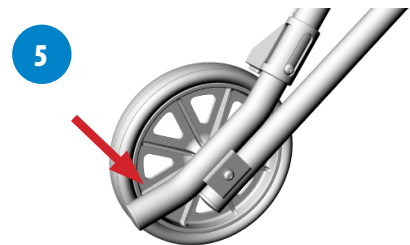
The brake is set correctly if there is no play in either the brake lever or the Bowden cable and if the wheels turn without rubbing or grating.

The braking strength can be adjusted using the set screw on the Bowden cable for the brake blocks on the back wheel (4)



## CURB CLIMBER

- Pressing your toe down on the extended frame makes it easier to lift the front wheels (to negotiate curbs, for example)(5).



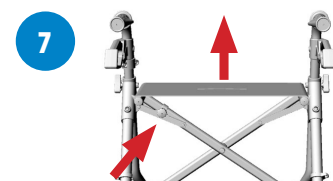
## GRIP HANDLE ADJUSTMENT

- Loosen the height adjustment screw and remove it from the frame.
- Adjust the handles to the correct height (see opposite page).
- Place the screw in the correct position and tighten it firmly (6).



## FOLDING UP YOUR WALKING FRAME

- Loosen the locking pin under the seat.
- Pull the folding strip in the middle of the seat and the walking frame will fold up (7).



## SELECTING THE APPROPRIATE HEIGHT



**WARNING!** Seek advice from a qualified health professional for the appropriate height to suit your needs.

It is important to set the walking frame to the correct height therefore it is always best to seek guidance from your Health Care Professional for the appropriate height level to suit your needs.

When the frame height is correct the user should be able to maintain an upright posture with the elbow slightly flexed. In this way, body weight is taken through the frame by pushing down on the frame when walking.

### The general guide is:

1. Stand with your arms relaxed at your side.
2. The top of the walking frame handle should be aligned with the wrist. (You can also align with the hip joint area but the wrist measurement is more often correct.)
3. The user should not have their shoulders raised or dropped when using the walking frame.



**CAUTION!** Beware of pinch points when adjusting any of the walking frame functions.

## 7. CARE AND MAINTENANCE

### CLEANING

- Clean the walking frame regularly with a damp cloth.
- Use a mild washing agent and warm water for excess dirt build up.
- Do not use harsh abrasives or bleach based agents which may cause damage or discolouration.

### WHEELS

- Clean wheels with a mild washing agent and warm water.
- Lubricate with multi-purpose oil periodically or if wheels begin to squeak.

### MAINTENANCE

- Ensure that every part of the walking frame is secure at all times.
- Check all screws for tightness. If not, tighten if necessary.
- Replace any broken, damaged or worn items immediately.

## DISPOSAL

Products that can no longer be used are to be disposed of separately from household rubbish. This must be done according to the local and national regulations for environmental protection and raw material recycling. Please look at your local council's website for further information on the correct disposal.

## MAINTENANCE SCHEDULE

Weekly	Periodically	Yearly	Serviceable Components
<ul style="list-style-type: none"> <li>• Check brake function</li> <li>• Check all wheels, nuts and bolts are secure</li> </ul>	<ul style="list-style-type: none"> <li>• Check handgrips for wear</li> <li>• Check folding hinge bolts are secure</li> <li>• Check front and rear axle bolts are secure</li> <li>• Check frame for wear or cracks</li> <li>• Check wheels for damage or splitting</li> <li>• Check seat for wear. Ensure it is secured correctly to the frame</li> </ul>	<ul style="list-style-type: none"> <li>• Take the walking frame to an authorised dealer for a full check, clean and service.</li> </ul>	<ul style="list-style-type: none"> <li>• Hand grips</li> <li>• Wheels</li> <li>• Brake cables</li> <li>• Seat</li> <li>• Brake handles</li> <li>• Bearings</li> <li>• Nuts and bolts</li> </ul>



**WARNING!** If faults are found during any inspection remove from use immediately.



**WARNING!** Do not make any changes or modifications to this product without consultation from your Cubro agent.

For any servicing, maintenance and troubleshooting queries, please contact the Cubro service Department;

**Ph. 0800 656 527**

**Ph. +64 7 578 7228**

**E: sales@cubro.co.nz**

**cubro.co.nz**

**Address: 149 Taurikura Dr, Tauriko, Tauranga, New Zealand**



## 8. LIMITED WARRANTY

1. This warranty applies only to the original purchaser of CUBRO LTD's product (who must be a purchaser who is resident or carrying on business in New Zealand and who has purchased the product directly from CUBRO LTD, or from a CUBRO LTD authorized distributor or reseller in New Zealand) and it is not transferable to any other person or entity.
2. This warranty replaces all conditions, warranties or guarantees that might be implied by law in favour of any person, which are excluded to the fullest extent permissible by law. Where the Consumer Guarantees Act would apply but the purchaser acquires or holds themselves out as acquiring any product for business purposes, the guarantees provided under the Consumer Guarantees Act are excluded in relation to that product.
3. CUBRO LTD warrants the product to be free from defects in materials and workmanship from date of purchase for a period of one year (12 months). This warranty does not cover any damage, defect, expense or loss of any kind caused by accident, misuse, abuse, neglect, negligence, alteration or modification (which includes the use of unauthorised parts or attachments), improper service, repair by other than authorized personnel or any defects not related to materials or workmanship. Wear of components in normal operation and failures resulting therefrom are excluded from this warranty.
4. CUBRO LTD has no obligation to the purchaser and is not obligated to honour all or any part of this warranty unless the following procedure is followed by the purchaser:
  - a. Before making a warranty claim, the purchaser should ensure that the product is defective by following standard 'trouble shooting' procedures and be able to attribute the fault to a defect in materials and/or workmanship of CUBRO LTD;
  - b. If CUBRO LTD determines that the product is not defective, or that the warranty claim is otherwise invalid, CUBRO LTD shall charge the purchaser a handling and servicing fee as well as any freights costs.
  - c. Upon receiving notice from the purchaser of an alleged defect in a product (which defect should be reported to CUBRO LTD immediately), CUBRO LTD will issue a serialized return management authorization (RMA). The purchaser must then return the entire unit or remove, at the purchaser's cost, the defective component part(s) identified, pack the unit or the component part(s) in a manner to avoid shipping damage and to ship the unit or the component part(s) to either CUBRO LTD, or a service centre as specified by CUBRO LTD, within 30 days of the date of the serialized return authorization date.
  - d. If CUBRO LTD require additional information relating to the use of the product by the purchaser or any other relevant information, the purchaser will supply such information as soon as practically possible and in such a manner as CUBRO LTD may reasonably require.
  - e. If CUBRO LTD access the purchaser's claim, it will either repair or replace the product, or repair or replace the defect in workmanship, as it may determine in its sole discretion.
5. Proper selection of a specific product for a specific application and operating environment, and its compatibility with other equipment is the purchaser's responsibility. CUBRO LTD does not warrant the performance of its products or their suitability for a particular purpose.
6. CUBRO LTD shall not be liable under any heading (whether in contract, negligence, or otherwise) for any consequential, indirect or incidental loss or damages of any kind and the maximum aggregate liability of CUBRO LTD (under any one or more headings) shall be the purchase price of the product.







Freephone 0800 656 527

Freefax 0800 428 276

[www.cubro.co.nz](http://www.cubro.co.nz)